

Working Toward a National

A single, national view of reality is necessary for the vitality and viability of agriculture and agri-food in Canada. Provinces are at different stages of implementing traceability solutions.

Building on national standards for traceability, each province is responsible for its own specifics to track cattle within its jurisdiction. There

A traceability system is built on three basic elements:

- identifying animals or products
- identifying premises
- tracking the movement of animals, commodities, or food products

will be marketing opportunities for those provinces moving to this new reality.

Program initiation, development, and delivery require commitment from producers, industry, and provincial/territorial governments. All must be interested and committed to enhancing marketability and preserving food safety with consumers.

Full Traceability for Québec

Currently, Québec is the only province where full traceability—including the reporting of all animal movement—actually occurs. It is a requirement of membership in the province's stabilization scheme.

Québec producers must identify each calf with two ID tags supplied by the provincial Agri-Traçabilité Québec (ATQ) within seven days of birth if born at the farm, or within five months if born on pasture. Farmers have 45 days to notify ATQ of a calf's 1) individual ATQ tag number, 2) within-herd management number, 3) date of birth, 4) sex, and 5) category of animal.

However, if the animal has been registered by Holstein Canada, information is electronically downloaded to ATQ and the Canadian

Information on animals registered by Holstein Canada is electronically downloaded to CCIA in Calgary and ATQ (Québec only) in a one-step process.

Cattle Identification Agency (CCIA) in a one-step process.

Cattle moving and arriving at a new farm from within Québec must be reported within 45 days by listing the tag numbers, producer's ID number, and site address of operation.

Out-of-province cattle must comply with ATQ tag identification standards upon arrival at a new herd. The farmer has 45 days to activate the event on a form and file it with ATQ. The same process applies for imported animals, although the reporting time is 30 days.

ATQ must be notified within 45 days if an animal is moved to a secondary site, such as a pasture that is more than 10 km from the home farm. The producer ID and animal tag number, as well as the date leaving and the site number of the new location, must be noted.

Dairymen also have 45 days to report when an animal is shipped out of province. The reporting time is reduced to 30 days when cattle are shipped to a community pasture, or for export.

Lost tags must be

reported immediately, or when new tags arrive if the producer has ordered tags with the same ID number.

ATQ manages the database, the tags, and the tracking of cattle.

Act Governs Alberta Traceability

The Alberta Government and Alberta Livestock and Meat Agency (ALMA) are advancing their crusade now that a new provincial Animal Health Act is in effect; the mandatory June 2010 deadline should be met.

Regulations require producers to age verify all calves with CCIA, and register a premise ID on their home property with ALMA.

Calves recorded by their actual birth date must be verified within 90 days of birth. Those who batch-verify calves from the first to the last date of calving have eight months to complete paperwork from the time the first calf hits the ground.

Moreover, auction markets, vet clinics, fairs, and feedlots must take out their own premise ID—basically, anyone operating a co-mingling site.

The tracking system for following

Producers are required to age verify calves and register a premise ID on their home property.



National animal identification and traceability start on farm—regardless of event or location!

Traceability Framework

cattle around Alberta, and in-and-out of province, is still being built.

Nationally, premise IDs will be matched to CCIA tag numbers to track cattle within the CCIA database. The Alberta Livestock Information System (ALIS) will supply most of this data from reports filed by feedlots and provincial brand inspectors.

Premise ID in Ontario

The recent Listeriosis outbreak in Ontario underlines the urgency for a traceability program in this province—and for Canada.

OnTrace Agri-Food Traceability has been named to lead agriculture and agri-food traceability programs and initiatives in Ontario. It has two key drivers. The first is to strengthen the province's capacity to plan for, and respond to emergency situations. The second is to capitalize on innovative business opportunities where verifiable information can help support label claims, accelerate market access, and raise supply-chain efficiencies.

Building on animal ID, Dairy Farmers of Ontario (DFO) signed an agreement with OnTrace last fall. This enables DFO members to have their parcels of land assigned premise identification numbers.

Furthermore, participants receive the added benefit of a GS1

Global Location Number (GLN). This provides access to the GS1 Canada Party

GS1 is a global organization dedicated to the design and implementation of standards and solutions to improve efficiency and visibility in supply-and-demand chains globally and across sectors.

and Location Registry, permitting access to a global supply-chain management tool.

OnTrace validates premise location against other sources of data, providing an accurate, complete database. With strong links to the CCIA in Alberta and ATQ in Québec, Ontario members will find it easier to transition to animal-movement tracing.

Other Provinces

The provinces are in various stages of launching full-food traceability systems, following the National Framework. If you have further questions, the chart below includes a list of national and provincial contacts.

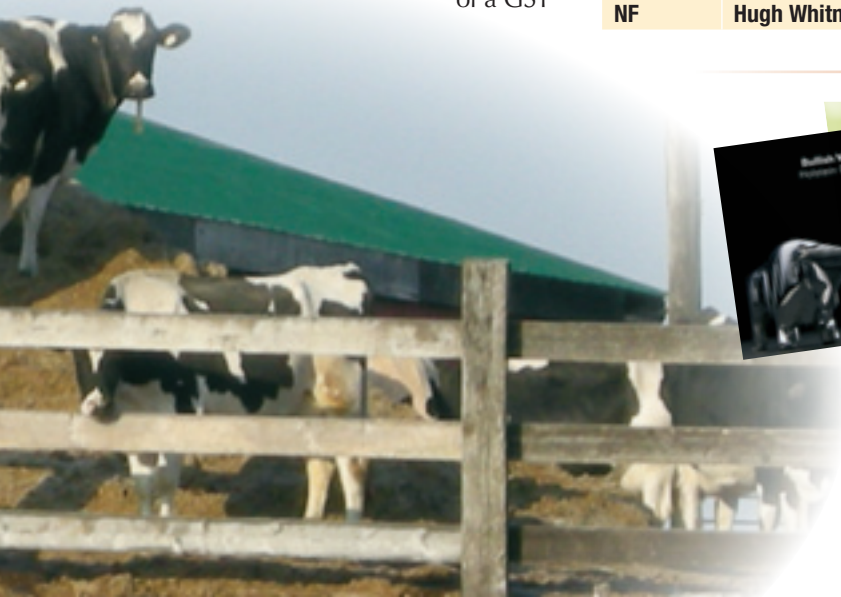
As more information is made available, updates will be provided in future issues of *Info Holstein*.

Everyone Responsible

A national traceability network will be a great step forward in solidifying traceability initiatives, raising awareness among all affected groups, and achieving a whole-chain solution.

In the food chain, traceability is everybody's business. Everyone has a role to play!

National and Provincial Contacts for Traceability Information			
	Name	Phone Number	E-mail
National	Richard Robinson	613-773-6172	rrobinson@inspection.gc.ca
National	Eric Aubin	613-773-6172	eaubin@inspection.gc.ca
BC	Venkatech Sosle	604-556-3064	Venkatech.Sosle@gov.bc.ca
AB	Brent McEwan	780-427-2799	brent.mcewan@gov.ab.ca
SK	Paul Marciniak	306-933-6888	paul.marciniak@agr.gov.sk.ca
MB	Wayne Lees	204-945-7685	wayne.lees@gov.mb.ca
ON	Gwen McBride	519-826-3112	gwen.mcbride@ontario.ca
Qc	Chi-Mai Vu	418-380-2100	Chimai.vu@mapay.gouv.qc.ca
NS	George Smith	902-893-6363	smithgc.@gov.ns.ca
NB	Clint McLean	506-453-6735	clint.mclean@gnb.ca
PE	Paul Jenkins	902-368-5654	pjenkins.@gov.pe.ca
NF	Hugh Whitney	709-729-6879	hughwhitney@gov.nl.ca



2008 Annual Report

Go to www.holstein.ca for your direct link to the Holstein Association of Canada's 2008 Annual Report. Read it online or print it easily from your home computer.

Alternatively, if you wish to receive the 20-page booklet (English or French) by mail, contact Jane Whaley by e-mail jwhaley@holstein.ca, phone 519-756-8300, fax 519-756-9982, or mail Box 610, Brantford, ON N3T 5R4.